


# ROCKVILLE CONSTRUCTION



 Roadway Resurfacing

 Roadway Resurfacing and Shoulder Widening

Resurfacing replaces the top layer of asphalt. This extends the life of the roadway and provides a smoother driving surface.



# ROCKVILLE CONSTRUCTION

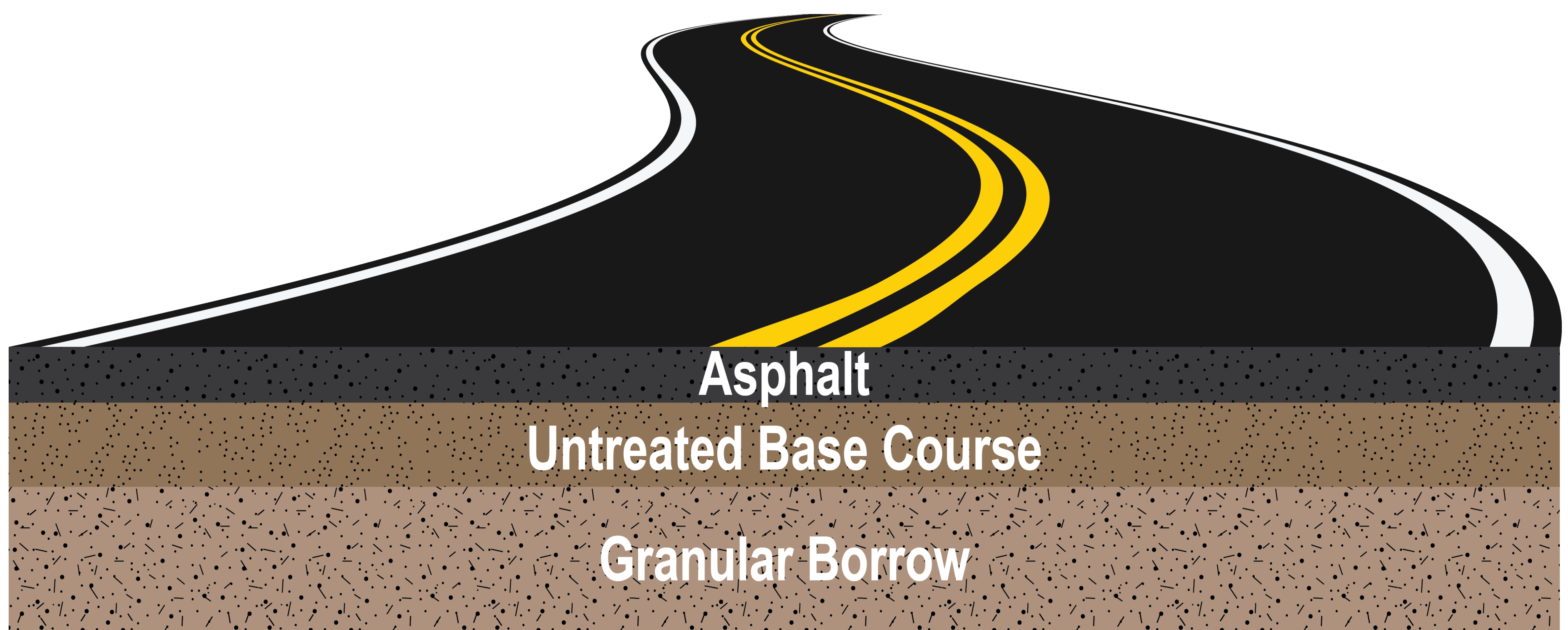
Contractor is Western Rock.

Construction will be during daytime hours from January to April 2017.

One travel lane will be maintained at all times, controlled with flaggers and a pilot car.

Traffic stops of up to 20 minutes can be anticipated in each direction.

# SPRINGDALE RECONSTRUCTION



**Reconstruction is when all roadway material, including base layers, is removed and replaced with new material.**

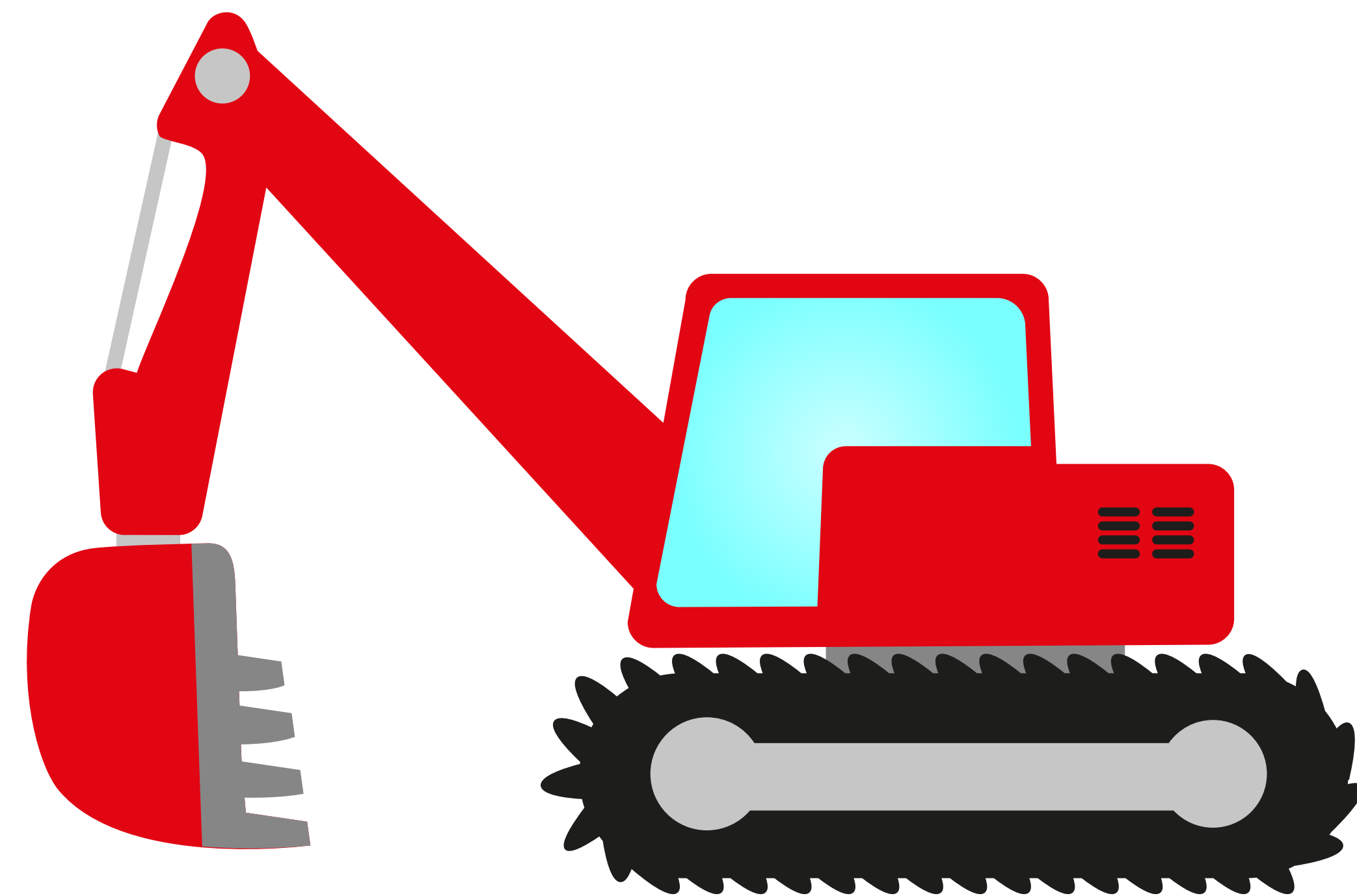
Reason:

- Potholes and cracking have deteriorated the road to a point where resurfacing will not fix the damage

Benefits:

- Will allow UDOT to address drainage and utility concerns
- Road will be entirely new with an extended life cycle of approximately 7 years before maintenance is needed

# SPRINGDALE SPECIFICATIONS

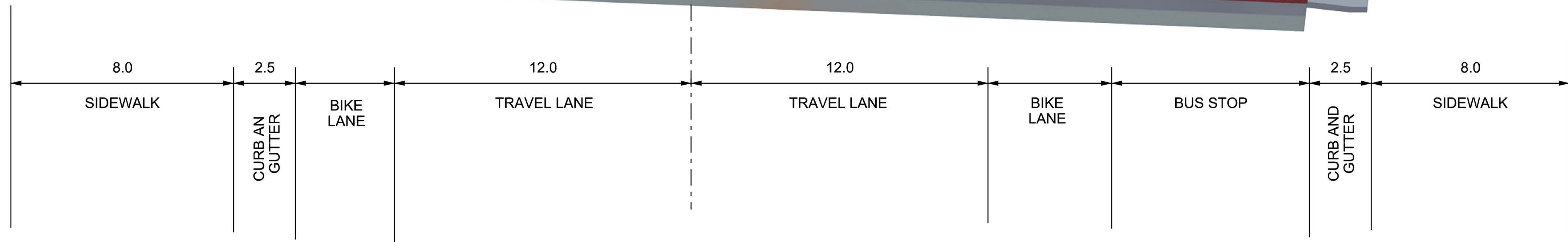


UDOT provides plans and specifications to bidding contractors that provide information on how the roadway needs to be built. It is up to the contractor to determine when, where and how the construction will be completed.

The specifications include details on:

- Completion date
- Work hours
- Access requirements (driveway access must be maintained to businesses and residents but the access size may be narrowed to accommodate driveway construction)

# SPRINGDALE CROSS SECTION



# SPRINGDALE PARKING



An estimated 250 - 300 on-street parking spots will be removed.

Delivery trucks currently park in “no parking” areas for deliveries. These areas may not be available after the project is complete. Strategies to accommodate deliveries to businesses will need to be established. Contact the Town of Springdale to offer your insights.

Springdale is currently studying the need for and viability of off-street parking areas. Contact the Springdale Planning Commission for more information and to offer your insights.

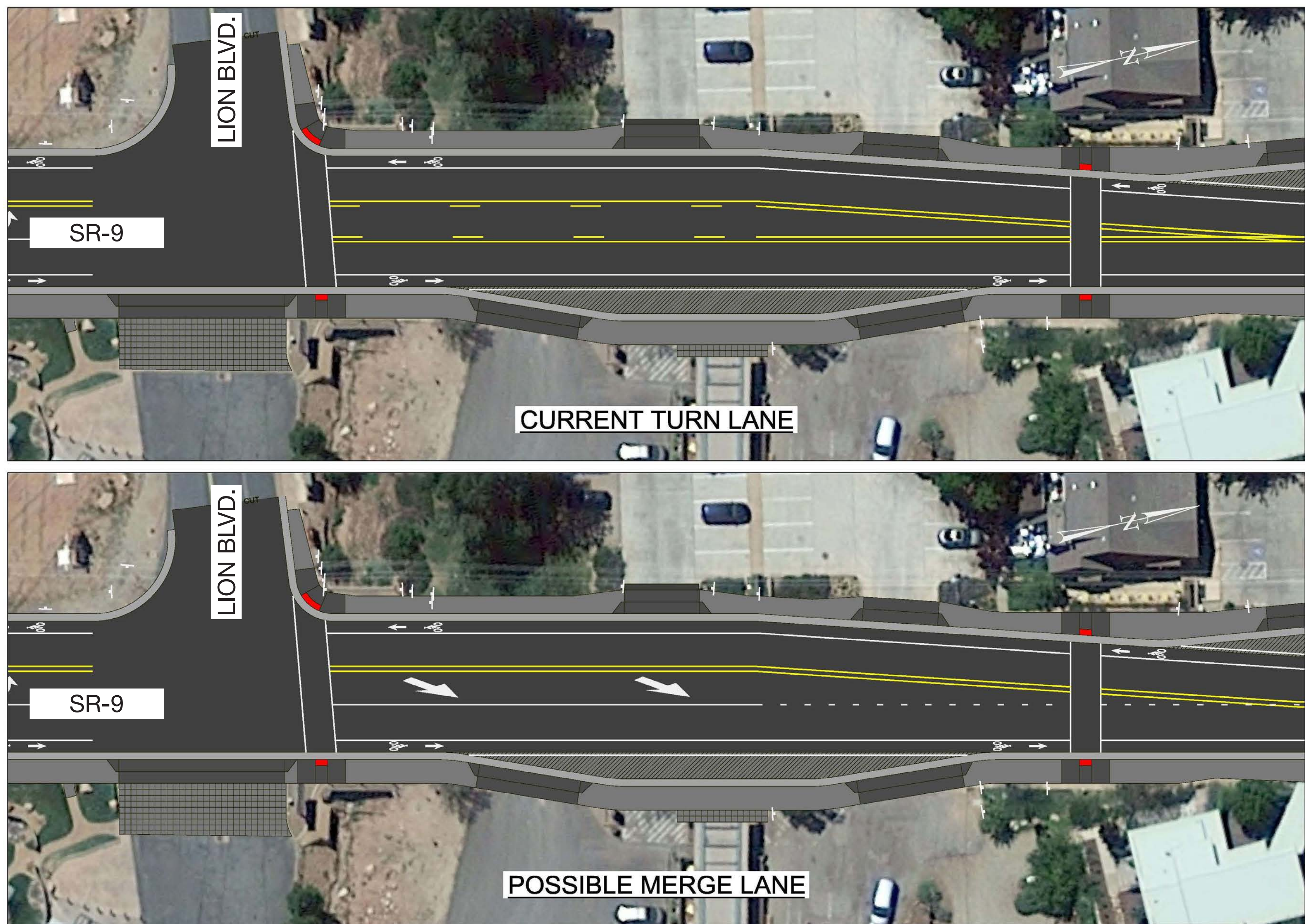
# SPRINGDALE DITCHES

The project will remove the majority of the irrigation ditches through Springdale.

Memorial pavers or stamped colored concrete will be placed where ditches are removed.



# SPRINGDALE LION BLVD



A left turn lane will be added from SR-9 onto Lion Blvd.

This left turn lane can be turned into a merge lane for traffic headed towards Zion National Park on SR-9, at Springdale's discretion in the future.



# SPRINGDALE RIGHT-OF-WAY

- Right-of-way (ROW) is land owned by UDOT for transportation purposes
- UDOT already owns ROW along SR-9 and will use most of that land for this project
- Personal items in the ROW area must be removed by the property owner before October 2017, including unpermitted signs and landscaping. UDOT will work with property owners to relocate permitted signs. Please visit the SR-9 team at the project map display for further details.

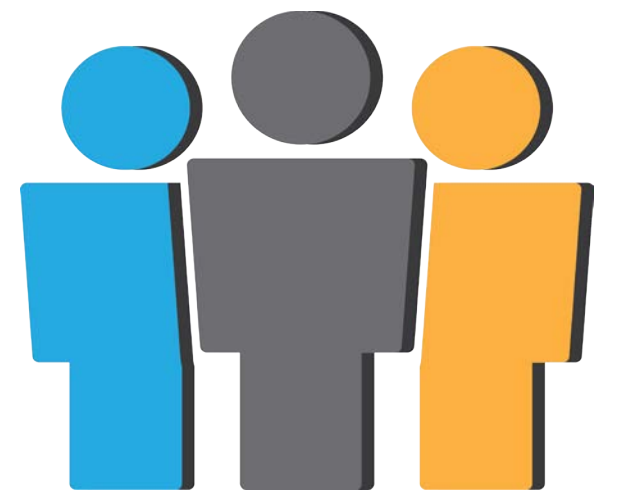
# SPRINGDALE NEXT STEPS



Complete Design (May 2017)



ROW Negotiations (Spring 2017)



Advertise for Contractor (July 2017)



Construction (October 2017 - April 2018)

# CONTACT Us

SR-9

**RENEWED**

Rockville to Zion National Park

(888) 556-0232

SR9@utah.gov

## SR-9 Working Group Members

Jim Butterfus

Chris Snodgress

Tom Dansie / Rick Wixom

Stephani Lyon / Kurtis Jones

Kathy LaFave

Max Gregoric

Paul Mailloux

Kavarra Corr

Lynn Anderson

Patsy Chaffin

Jeff Carlson

Nate Wells

Zion National Park

Springdale School

Springdale Town

Cliffrose

LaFave Gallery

Sol Foods

Kinesava Ranch

Resident

Resident

Resident

Resident

Zion Canyon

Visitors Bureau